

Resources for Implementation

Use this guide to select next steps and resources to support each of the Lexia English Language Development™ Implementation Best Practices.



Many resources listed within this document can be found in the Lexia English Resources Hub, which provides teachers access to essential background and instructional resources necessary to support successful implementation. Access the Resources Hub from the myLexia® “Resources” tab.

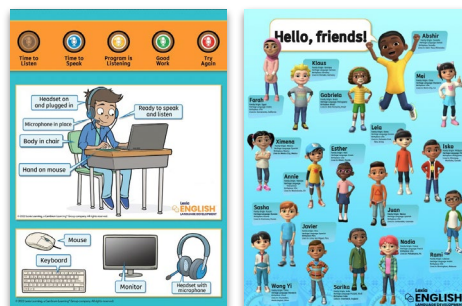
Resources indicated by * are available to educators with a Lexia® Success Partnership. Please contact your site’s Success Manager (if applicable) to learn more.

Students understand why they are using Lexia English.

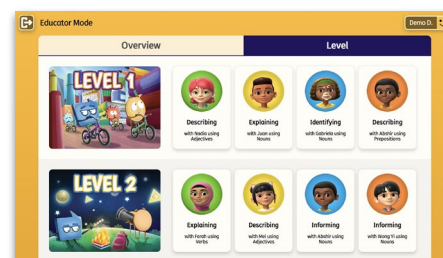
- Build familiarity and classroom routines to support implementation with the Student Modeling Session.
- Explore the Resources Hub to locate materials to help you introduce the program to students.
- Use Educator Mode to preview the program and explain it to students.



Student Modeling Session*



Lexia English Classroom Posters



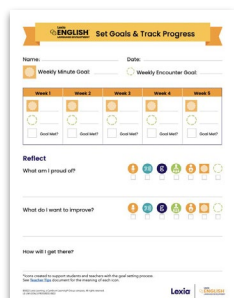
Educator Mode

Students meet their recommended weekly student program usage goals.

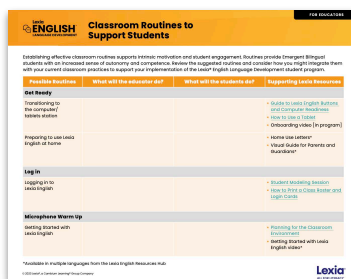
Grades K-2: 10-15 minutes per session, 3 times per week

Grades 3-6: 15-20 minutes per session, 3 times per week

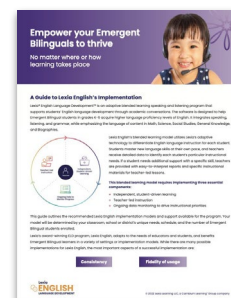
- Encourage students to monitor their own usage using the Student Dashboard.
- Develop a schedule using available technology resources in your school (classroom computers or tablets, computer lab, laptop carts).
- Consider alternate times for students who need additional minutes (before and after school programs, home use, intervention block).



Student Goal Setting Worksheet



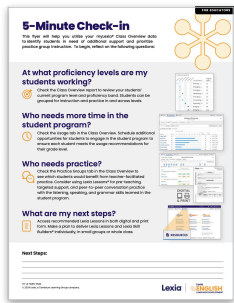
Classroom Routines to Support Students*



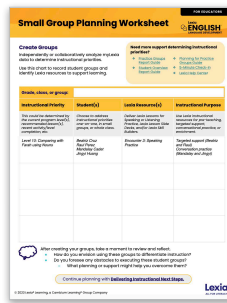
Lexia English Implementations Guide*

Educators check myLexia at least weekly to review their class and student data and utilize the data to make instructional decisions.

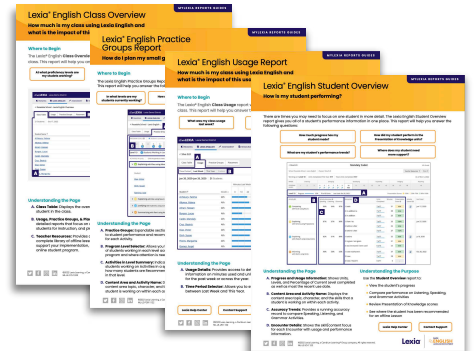
- Set a regular time to review reports at least once a week.
- Schedule data conversations with classroom teachers, families, and students.
- Consider printing some reports for data conversations.



5-Minute Check-In



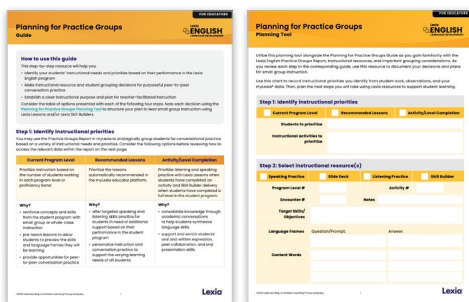
Small Group Planning Worksheet



myLexia Reports Guides

Educators reinforce online learning and provide targeted instructional support for students using Lexia instructional resources.

- Visit myLexia to view the Practice Groups Report and identify groups of 2 or more students for reteaching, pre-teaching, and targeted support through peer-to-peer conversations (Lexia Lessons®).
- Upon completion of a level, plan for students to complete Lexia Skill Builders® focused on oral presentation skills.
- Set aside time to explore, prepare, and organize materials.
- Display language frames for easy student reference.



Planning for Practice Groups Guide and Planning Tool*



Lexia Lessons & Skill Builders Implementation Guides



Lexia Lessons & Skill Builders Checklists

Educators celebrate and communicate student progress.

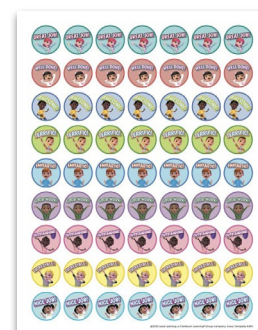
- Consistently review the Class and Student Overviews to track progress and award Achievement Certificates.
- Develop routines to support student self-monitoring of progress, such as with Achievement Charts.



Achievement Certificates



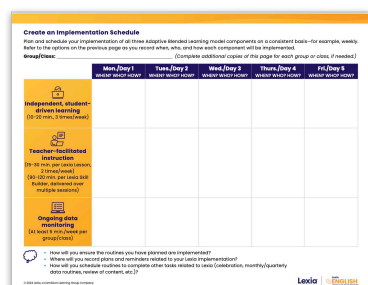
Achievement Charts



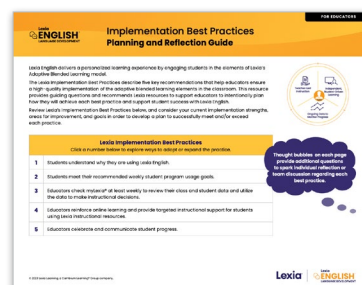
Character Rewards

Putting it all together

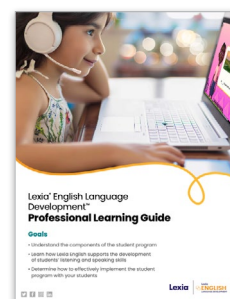
These guides support you to consider and plan when, where, and how you will implement all the components of Lexia English.



Classroom Implementation Plan



**Implementation Best Practices:
Planning and Reflection Guide***



Professional Learning Guide

Survey

Please take some time to consider how this resource has helped to make your implementation of Lexia English successful by clicking [here](#) to complete a two-minute survey.